



DUCABIKE

# Kit istruzioni/installation kit - Monster 937

art. SAS17

Ducabike consiglia di far effettuare il montaggio da un meccanico specializzato  
Ducabike recommends to have the installation done by a specialized mechanic

MADE IN ITALY



N. - COD. Qt.

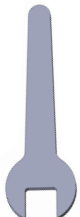
- ① - SAS17-SB 1
- ② - SAS17-SA 1
- ③ - SAS05-T 2
- ④ - OR001 1
- ⑤ - DAD011 - M6 2
- ⑥ - TCE118 - M8 2
- ⑦ - TBE022 - M6 2

- ⑧ - OPTIONAL - OH01
- ⑨ - OPTIONAL - COS01

### Utensili/tools



4 - 5 - 6



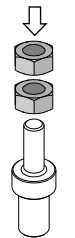
10



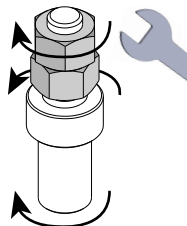
Frenafilletti  
Threadlocker

### SAS05-T Fissaggio / SAS05-T Fixing Steps

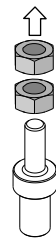
1<sup>a</sup> - Operazione  
1<sup>st</sup> - Operation



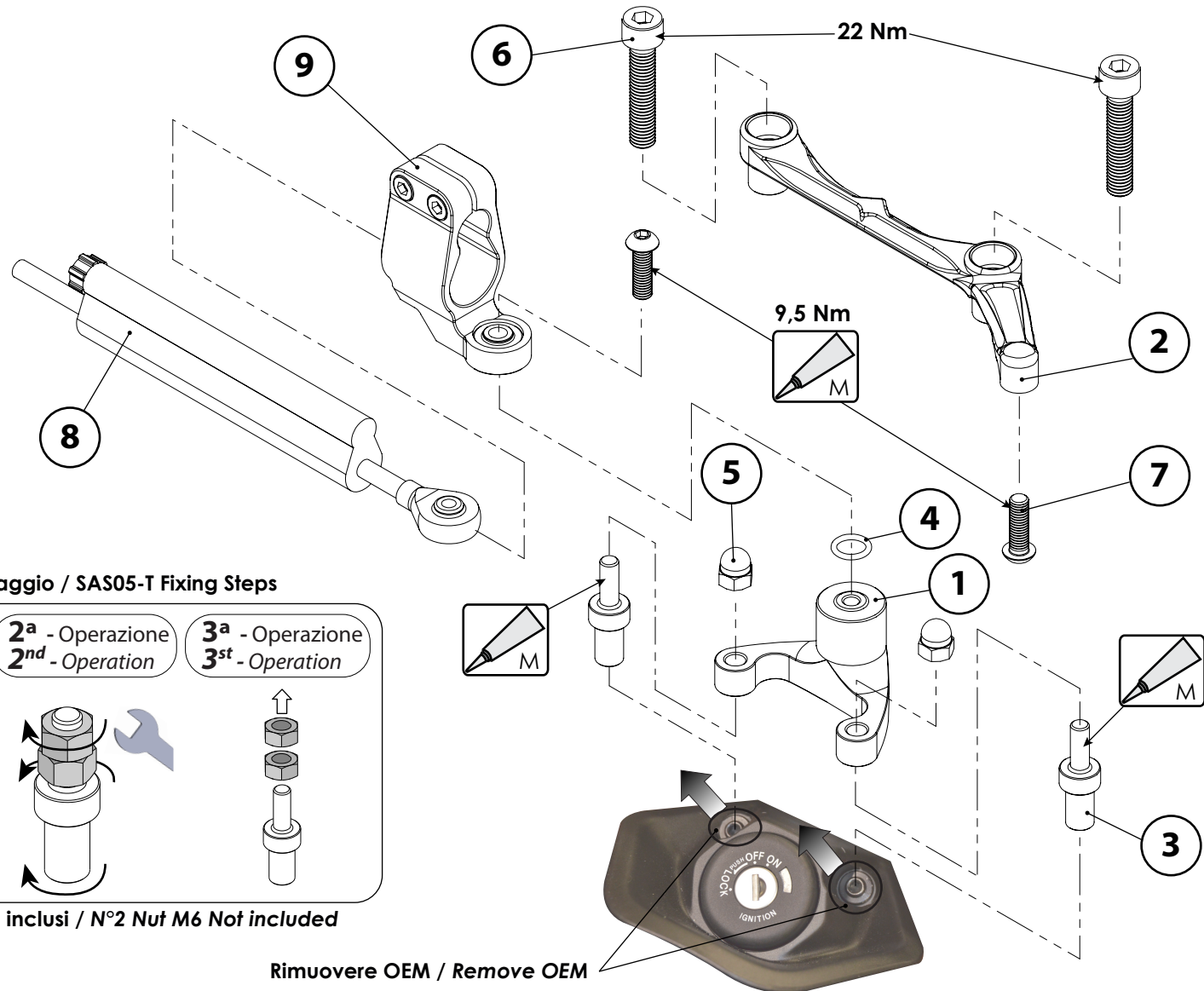
2<sup>a</sup> - Operazione  
2<sup>nd</sup> - Operation



3<sup>a</sup> - Operazione  
3<sup>st</sup> - Operation



N°2 Dadi M6 Non inclusi / N°2 Nut M6 Not included



Rimuovere OEM / Remove OEM