



DUCABIKE

# Kit istruzioni/installation kit - Protezione telaio/ Frame protections

art. PTM03

Ducabike consiglia di far effettuare il montaggio da un meccanico specializzato  
Ducabike recommends to have the installation done by a specialized mechanic

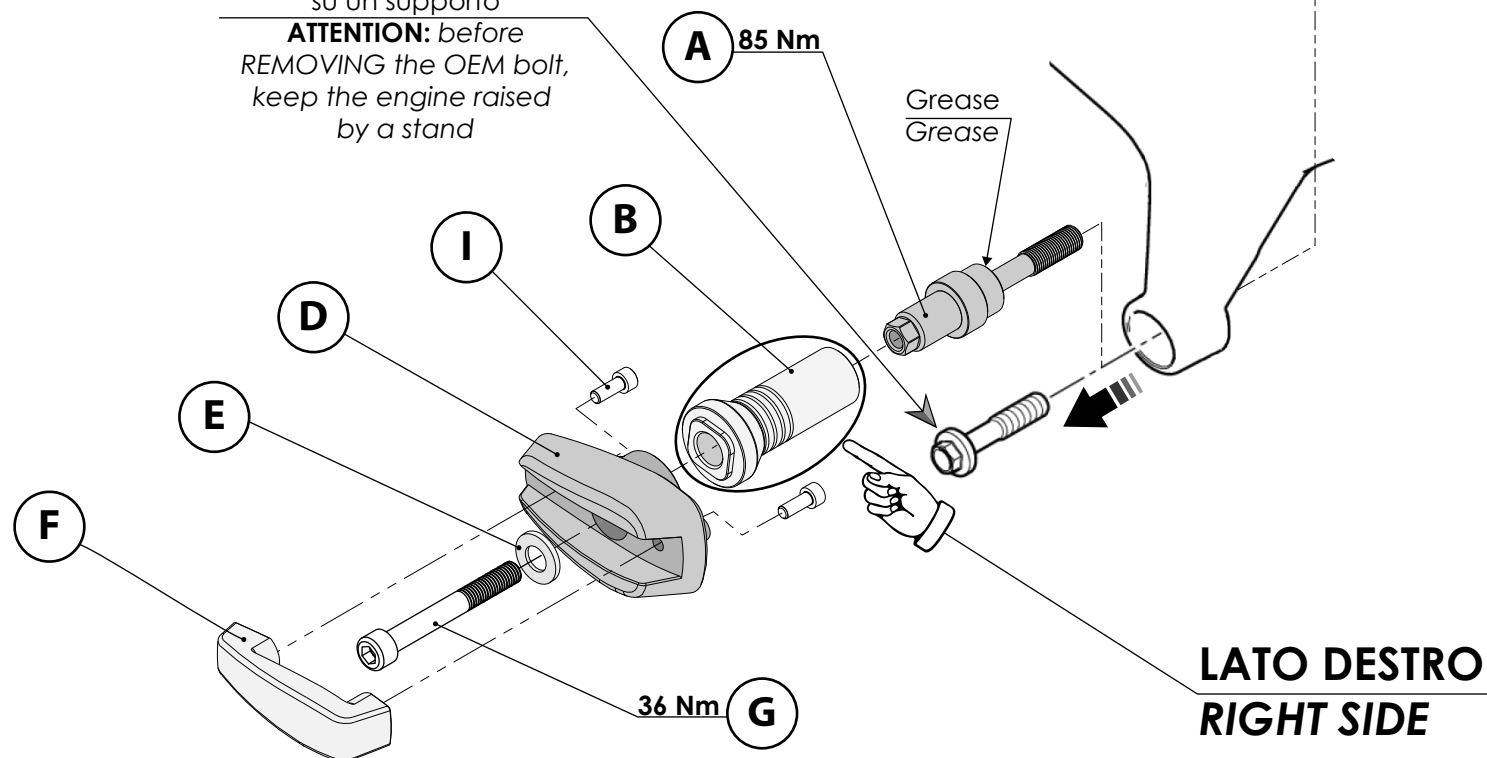
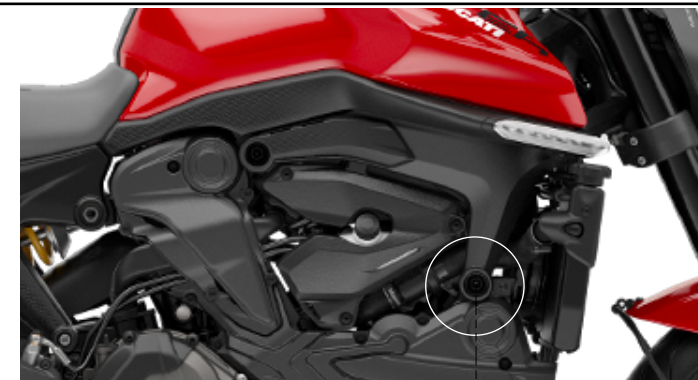
MADE IN ITALY

COD.	Qt.
Ⓐ - VISP12	2
Ⓑ - PIF08	1
Ⓒ - PIF10	1
Ⓓ - TPT03	2
Ⓔ - RND002	2
Ⓕ - SLI03	2
Ⓖ - TCE015 Vite/screw M10x80	1
Ⓗ - TCE128 Vite/screw M10x115	1
Ⓘ - TCE069 Vite/screw M6x16	4

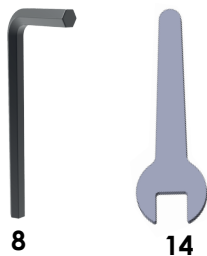
1<sup>a</sup> - Operazione  
1<sup>st</sup> - Operation

**ATTENZIONE:** prima di RIMUOVERE la vite OEM, tenere il motore in appoggio su un supporto

**ATTENTION:** before REMOVING the OEM bolt, keep the engine raised by a stand



## Utensili/Tools



8

14



DUCABIKE

# Kit istruzioni/installation kit - Protezione telaio/ Frame protections

art. PTM03

Ducabike consiglia di far effettuare il montaggio da un meccanico specializzato  
Ducabike recommends to have the installation done by a specialized mechanic

MADE IN ITALY

2<sup>a</sup> - Operazione  
2<sup>nd</sup> - Operation

